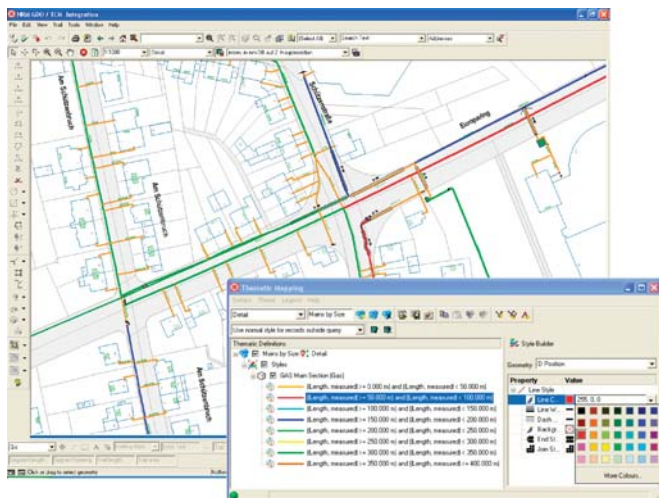


Product Description

GE Energy's Smallworld Thematic Mapping* 4 is an integrated tool for Smallworld Core Spatial Technology* 4 which facilitates the creation of thematic representations of spatial data. Thematic maps are very useful in exploratory spatial data analysis, confirming hypotheses, and revealing trends and patterns in data. Data patterns are much easier to spot on a thematic map than on a tabular report.



With Thematic Mapping, network operators have a simple application to collect, analyze and present up-to-date information for common tasks such as:

- Regulatory reports
- Key customer analysis
- Asset rehabilitation studies
- Site selection and location
- Rate case analysis
- Historical outages by region or circuit
- Network facility maps by owner, material, age, etc.
- Energy use patterns

Thematic Mapping contains the ability to generate the most common thematic display types, including graduated color, graduated symbol, and unique value, and provides a user friendly interface to define and manage thematic displays. Based on a named "theme," comprehensive queries can be created, saved and reused for subsequent thematic displays as new information becomes available. Two types of themes can be defined:

- **Single-Query.** In this type, each desired attribute value and associated thematic representation is explicitly defined.
- **Multi-Query.** In this type, the entire collection of values for enumerated attributes or value ranges for numeric attributes are presented for association with a thematic representation.

In either case, the user can control data that does not meet the query requirements — either by displaying the outlying data in a default style or by masking the data from the display entirely.

Saved themes can also be shared with other users, providing a standard template for robust geospatial analysis throughout the organization.

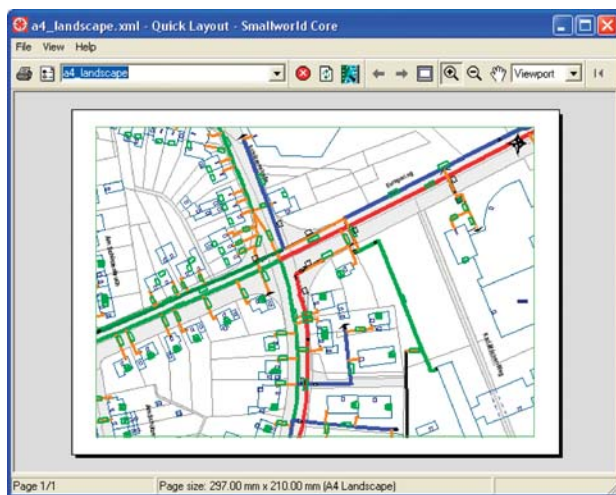
Benefits

- **Easy-to-use tools for the entire organization.** Theme definitions and query builders use standard interfaces that are familiar to all Smallworld users, saving network operators valuable time in preparing maps and reports. Even new users can easily generate complex maps and queries, promoting the use of geospatial data through the organization.
- **Enterprise-wide access to thematic definitions.** Themes can be shared across the organization, providing a uniform map-and-report format in accordance with company business processes.
- **Fully integrated with Smallworld Core Spatial Technology.** As a Smallworld application, Thematic Mapping takes advantage of standard Smallworld features such as Smallworld Explorer and printing capabilities, minimizing training requirements.



Key Features

- Flexible thematic definition for any object class using standard symbol and color palettes
- Spatial and slicing queries to filter and classify data
- Style and visibility queries to present only relevant data
- Thematic definitions can be saved and restored for future use, always using the most current network data
- Dynamic annotation builder allows the use of any attribute for annotating the theme
- Themes can be associated with specific display scales and/or display styles, providing control over their visibility
- Data model independent, with comprehensive support for Network Resource Manager and Smallworld Office products



Standard Tasks and Expanded Capabilities

The Thematic Mapping 4 program also performs a variety of standard tasks, such as:

- Regulatory reports
- Key customer analysis
- Asset rehabilitation studies
- Site selection and location

These tasks can then be expanded for use with:

- Construction maps of status, such as *existing*, *completed*, or *proposed*
- Network facilities maps colored by circuit, phase, and/or voltage
- Critical customer analysis to highlight locations of hospitals, government, etc.
- Asset reliability studies, filtering for facilities by age and/or material
- Regulatory reports showing service areas, facilities, and infrastructure
- Marketing studies to find potential customers near existing networks

For more information about this product, contact your GE Energy sales representative, visit <http://www.ge.com/energy>, or email us at energy.tdsolutions@ge.com

* Trademarks of General Electric Company.
Notice of Copyright and Proprietary Rights
©2006 GE Energy Services, Inc. All rights reserved.
The contents of this manual are the property of GE Energy Services, Inc. No part of this work may be reproduced or transmitted in any form or by any means, except as permitted in written license agreement with GE Energy Services, Inc. GE Energy Services, Inc. has made every reasonable attempt to ensure the completeness and accuracy of this document. However, the information contained in this manual is subject to change without notice, and does not represent a commitment on the part of GE Energy Services, Inc.
©2006 General Electric Company. All rights reserved.

GEA-14800 (12/06)

